

ISE 101 Basics



Today's topic: ISE: Bridging Security and Enterprise Networking

ISE Sales Acceleration Team

WW ENS Sales – Stephen Carroll & Robert

Palmer
Thursday, March 23, 2023

Agenda

- 1 What is ISE?
- 2 ISE Outcomes
- 3 What's new in ISE 3.2?
- 4 What's in it for you?
- 5 Why ISE?
- 6 ISE – the bridge between EN and Security
- 7 ISE as part of Cisco Zero Trust

What is Identity Services Engine (ISE)?



Cisco ISE for intent-based access

Cisco Identity Services Engine (ISE) is an industry leading, Network Access Control and Policy Enforcement platform, that lets you:

See

- Users, endpoints and applications



Secure

- By controlling network access and segmentation

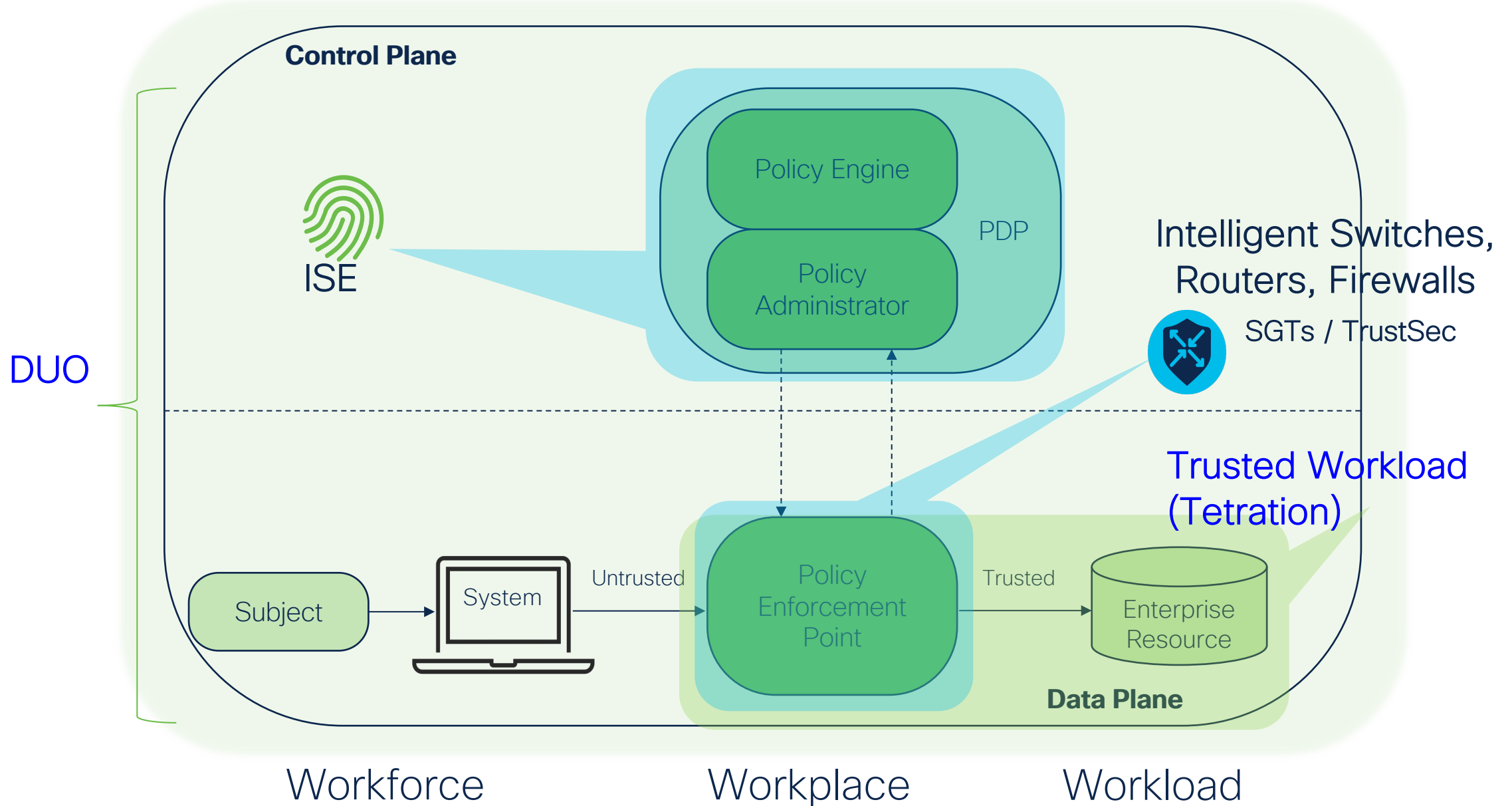


Share

- Context with partners for enhanced operations



NIST Zero Trust Architecture – SP 800-207





ISE
Outcomes

ISE 3.X



Cloud Delivered

Use Case Based

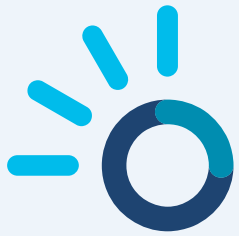
Easier to deploy

Faster Time to Value

< 20 minutes

Reduced TCO

(Total Cost of Ownership)



ISE 3.2 Release Highlights

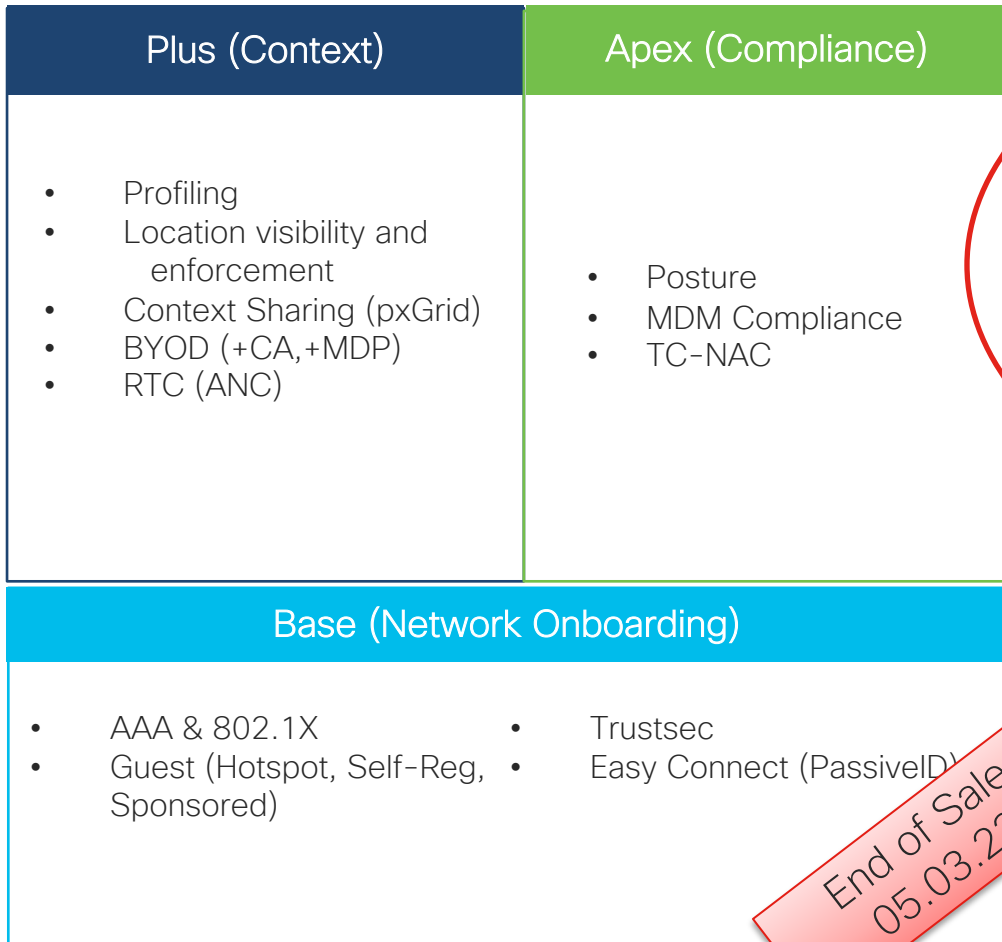


* Will require a future 3.1 patch
** Targeted for 3.2p1

More on ISE YouTube Channel : <https://cs.co/ise-videos>

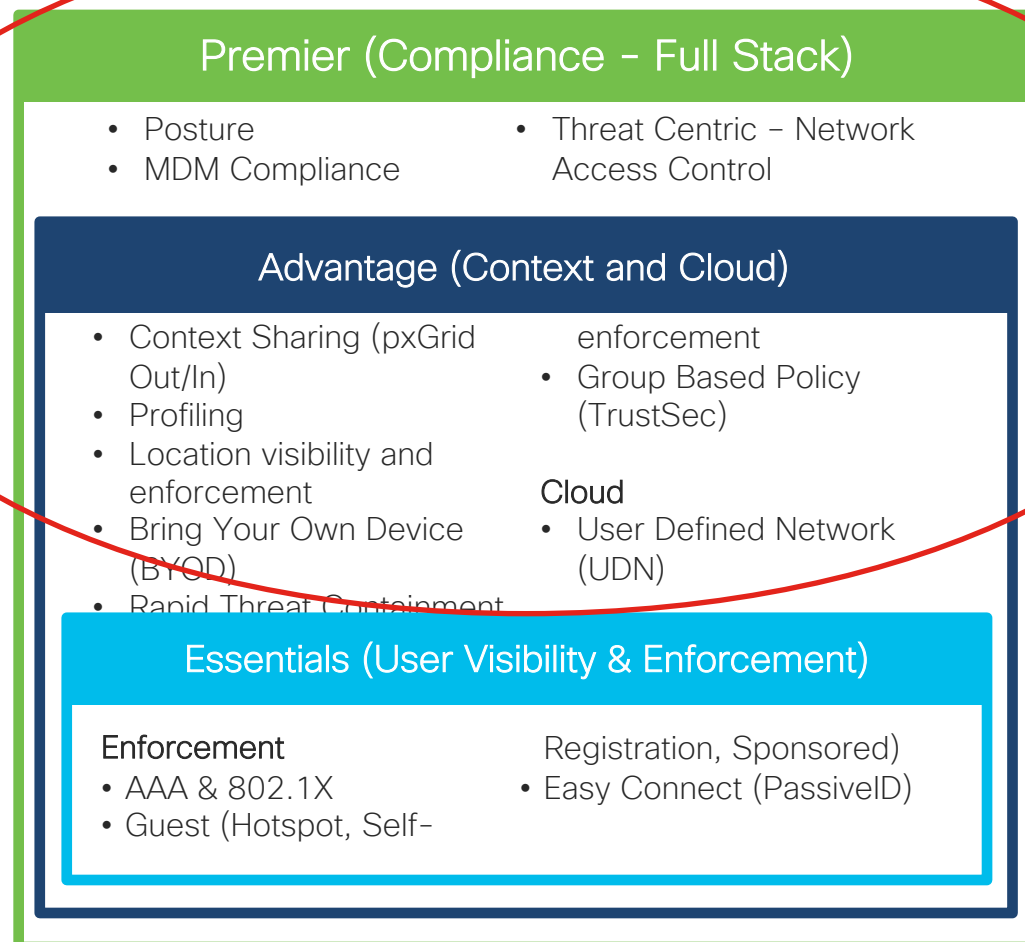
The new ISE 3.2 - licensing

2.X (Lego Model)



End of Sale
05.03.22

3.X (Nested-doll Model)



- Smart licensing
- Just one common VM license
- Evaluation license available

ISE Nodes – Mix and Match

Physical Appliances



SNS-3615
SNS-3655
SNS-3695
SNS-3715
SNS-3755
SNS-3795

Virtual Machines



Cloud Instances



What's in it for you?



Why ISE?

Gain visibility with context and control

Know who, what, where, and how endpoints and devices are connecting. Look deep into devices to ensure compliance and limit risk, with or without the use of agents.

Extend zero trust to contain threats

Software-defined network segmentation shrinks the attack surface, limits the spread of ransomware, and enables rapid threat containment.

Accelerate value of existing solutions

Integrate with Cisco and third-party solutions to bring an active arm of protection into passive security solutions and increase your return on investment (ROI).

Future proof your network security

ISE provides the foundation for policy control within Cisco DNA Center™ and is the linchpin for SD-Access.

ISE business value and ROI

Cisco ISE provides streamlined, scalable network access to help realize a stronger security posture. The composite organization received a **191% ROI** over the first three years of use, with a current returned value of **\$1.03 million** across many categories*, including:

44%

Improved security impact from breaches

33%

Reduced IT costs with automation

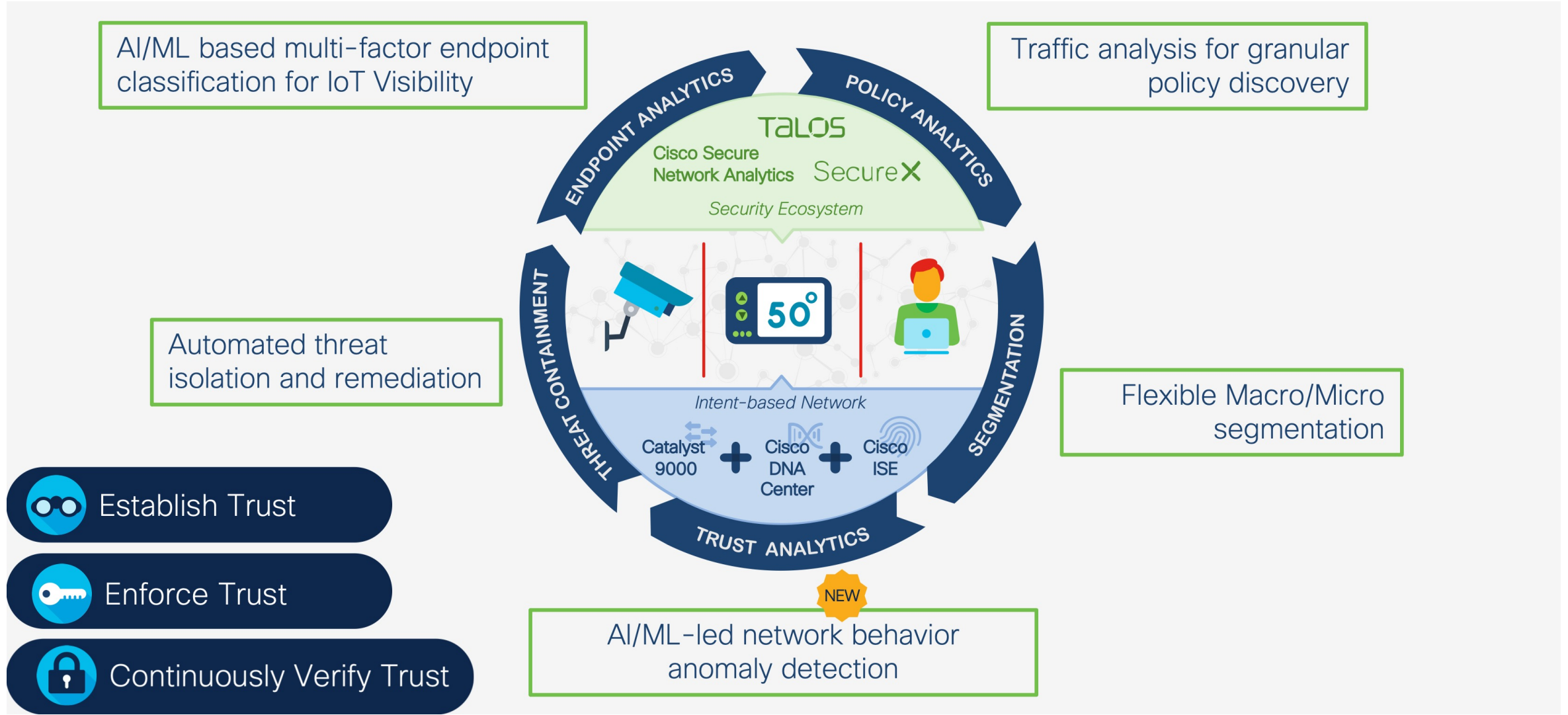
23%

Improved business outcomes, such as employee productivity

ISE – the bridge between EN and Security



DNA Center – ISE – SNA: Key capabilities

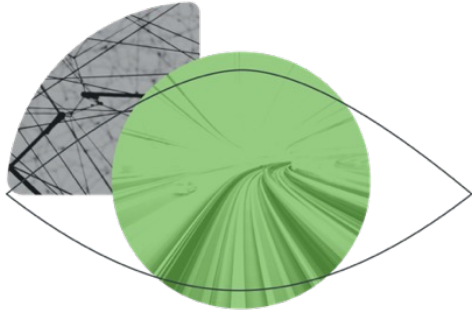


What it takes to get Zero Trust right

Zero Trust requirements



ISE: The foundation to Zero Trust in network security



Grant the right level of network access to users across domains

Visibility



Shrink zones of trust and grant access based on least privilege

Segmentation



Automate containment of infected endpoints and revoke network access

Containment

How Identity Services Engine enforces Zero Trust

Connecting trusted users and endpoints with trusted resources

Endpoint Request Access

- Endpoint is identified and trust is established.
- Posture of endpoint verified to meet compliance.

Trust continually verified

- Continually monitors and verifies endpoint trust level.
- Vulnerability assessments to identify indicators of compromise.
- Automatically updates access policy.



Endpoint classified, and profiled into groups

- Endpoints are tagged x/SGTs.
- Policy applied to profiled groups based on least privilege.

Endpoint authorized access based on least privilege

- Access granted.
- Network segmentation achieved.

Zero Trust Identity and Access

Access Problem



Cisco ISE



Cisco Duo



Cisco ISE + Duo

Access Problem	Cisco ISE	Cisco Duo	Cisco ISE + Duo
User + Device (On-Premise) → On-Premise Applications	No MFA	Web Only	
IOT Device (On-Premise) → On-Premise Applications			
User + Device (Off-Premise) → On-Premise Applications	VPN Based	Web Only	
User / Device (On-Premise) → User / Device (On-Premise)			
User + Device (On-Premise) → Cloud Applications	No MFA	No n/w security	
User + Device (Off-Premise) → Cloud Applications			

Summary:

Cisco ISE 3.X is Cloud ready,

DevOps friendly, and

fundamental for Zero Trust in the
network.



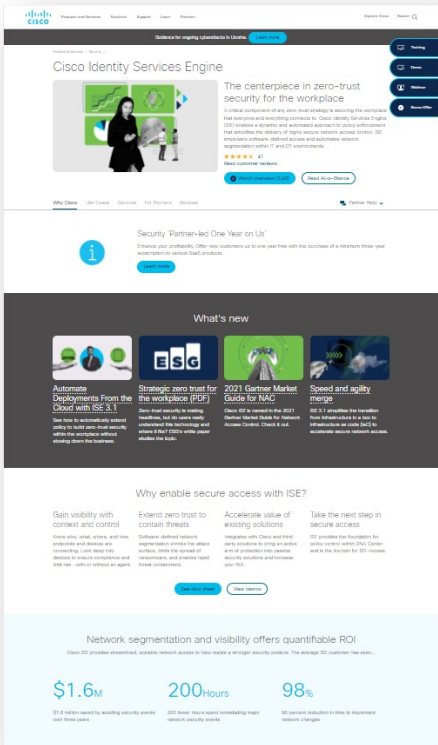
Call to Action

- Learn more about ISE by viewing our webinars & videos, and trying it out for yourself – it's free!
- Migrate to ISE 3.x before 2.7 reaches end-of-life (leverage the ISE Health Check)
- Stay in touch with Cisco and our Partners – we are here for you!



More on Cisco ISE...

Public Resources



ISE Deployment & Integration Guides: <https://cs.co/ise-guides>

ISE Documentation: <https://cs.co/ise-docs>

ISE Compatibility Guides: <https://cs.co/ise-compatibility>

ISE instant demo: <https://www.cisco.com/site/us/en/products/security/identity-services-engine/demos.html>

ISE Webinars and YT Channel: <https://cs.co/ise-webinars> <https://cs.co/ise-videos>

ISE @ Cisco DevNet: <https://cs.co/ise-devnet>

ISE Community: <https://cs.co/ise-community>

Forrester report: [The Total Economic Impact Of Cisco Identity Service Engine \(ISE\)](#)

Landing page for ISE Upgrade program:
https://cloud.path.cisco.com/SWC_Upgrade?product=ISE

ATX page: <https://learningnetwork.cisco.com/s/atx-customer-experience>

Register for Security Advisories through Cisco Notification Service (CNS) which is free:
<https://www.cisco.com/c/en/us/support/web/tools/cns/notifications.html>

cisco.com/go/ise





The bridge to possible